

PLANTING ZONES

COLUMBIA COMMUNITY*

TAPADERO*

Lots: 101- 154 - Edmunds

Lots: 201- 264 - Monterey

**COMMON
AREA**

- Undisturbed natural desert
- Consult DC Ranch offices for locations

**PRIVATE
ZONE**

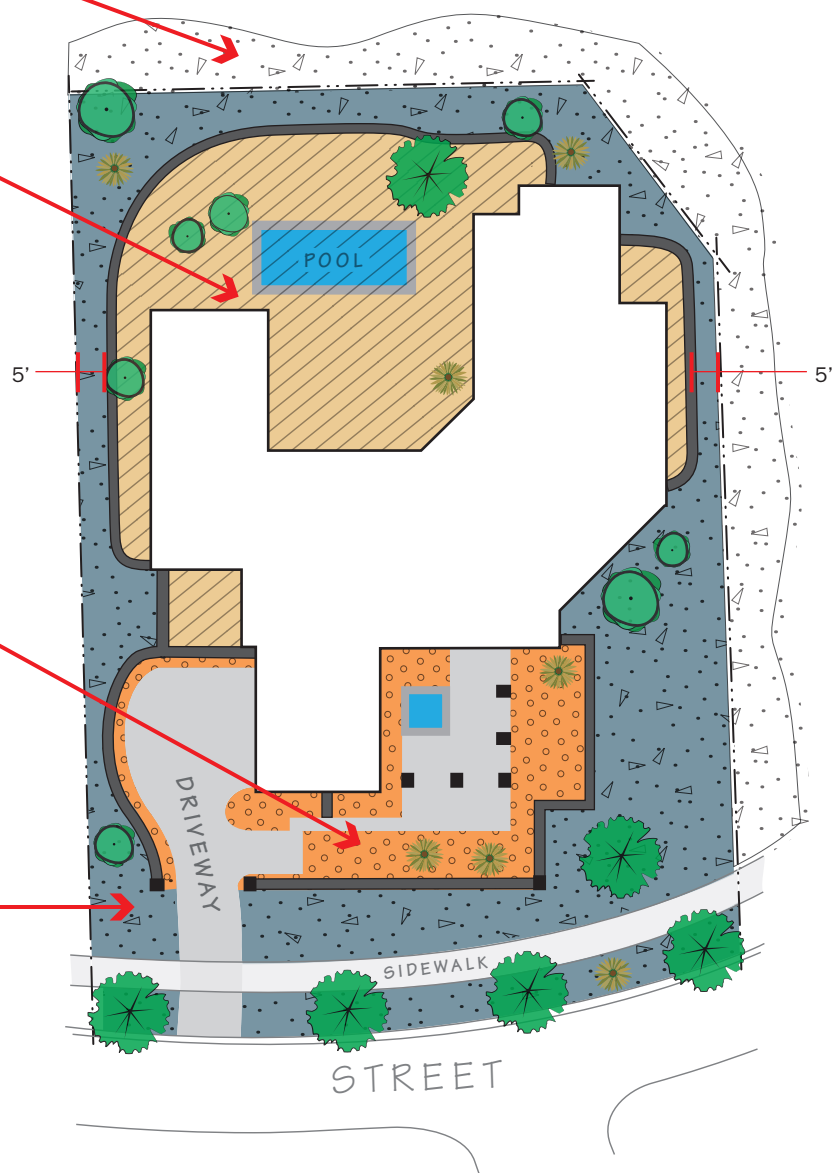
- Behind 5 ft. high privacy wall
- Area closest to the home out of direct view from adjacent properties and the street.
- Behind a 5 ft. privacy view fence. (The area from the fence to 5 ft. away is Enhanced Zone)
- Plant density = 1:25 sq. ft.
- No base shrub requirements

**ENHANCED
ZONE**

- Adjoins natural area
- Behind 3 ft. high courtyard wall
- Plant density = 1:25 sq. ft.
- Base shrub requirements are listed in the Abbreviated Plant Palette in this booklet.

**NATURAL
ZONE**

- Mimics the natural desert
- Plant density = 1:25 sq. ft.
- Base shrub requirements are listed in the Abbreviated Plant Palette in this booklet.



NOTE: Zone maps are for illustration purposes only and do not represent specific lots, nor any requirements for plant species, location or quantities.

*Subassociations may differ; check with property management on homeowner responsibility and additional restrictions.

Abbreviated Plant Palette

COUNTRY CLUB –Non-Custom: Columbia Community, Tapadero, plus Lots 101-154 and 201-264

Private Zone

Trees – Pendulous Acacia, Chilean Mesquite, Cascalote, Anacacho Orchid Tree, Desert Willow Hybrids, Swan Hill Olive, Mastic, Western Redbud

Cacti/Accents – Pendulous Yucca, Tropical Agave, Octopus Agave, Moroccan Mound

Shrubs (large) – Japanese Mock Orange, Bird of Paradise, Pineapple Guava, Cape Honeysuckle, Heavenly Bamboo

Shrubs (med/small) – Dwarf Natal Plum, Cape Plumbago, Dwarf Bottlebrush, Damianita, Dwarf Mock Orange

Groundcovers – Rain Lily, Wedelia, Asian Jasmine, Cape Plumbago, Vinca, Elephant Food, Bulbine, Prostrate Acacia, Ground Morning Glory

Vines – Bougainvillea, Snail Vine, Common Trumpet Creeper, Creeping Fig,

Enhanced Zone

Trees – Texas Ebony, Hybrid Palo Verde, Palo Blanco, Chaste Tree, Mulga, Western Redbud

Cacti/Accents – Parry's Agave, Red Yucca, Golden Barrel, Blue Glow Agave, Butterfly Agave, Totem Pole Cactus

Shrubs (large) – Hopseed Bush, Texas Sage, Woolly Butterfly Bush, Mexican Bird of Paradise, Bush Lantana

Shrubs (med/small) – **Base Shrub Requirement**- 1 of every 6 plants must be Bursage, and 1 of 6 may be any combination of Bursage, Desert Marigold or Turpentine. Additional choices for this zone include:

Baja Ruellia, British Ruellia, Dwarf Yaupon Holly, Mexican Blue Sage, California Fuchsia, Coral Fountain, Angelita Daisy, Cleveland Sage

Groundcovers – Trailing Lantana - purple, Mexican Evening Primrose, Dwarf Rosemary, Desert Marigold, Rail Lily, Sierra Gold Dalea, Saltillo Primrose

Vines – Lilac Vine, Pink Trumpet Vine, Lady Bank's Rose, Queens Wreath

Natural Zone

Trees – Ironwood, Velvet Mesquite, Blue Palo Verde

Cacti /Accents– Saguaro, Engelmann's Prickly Pear, Buckhorn Cholla, Ocotillo, Fire Barrel, Pincushion Cactus

Shrubs (large) – Creosote, Jojoba, Desert Lavender, Wolfberry, Chuparosa

Shrubs (med/small) – **Base Shrub Requirement** – 1 of every 6 plants must be Bursage, and 1 of 6 may be any combination of Bursage, Desert Marigold or Turpentine. Additional choices for this zone include:

Globemallow, Goldeneye, Joint Fir, Penstemon, and Fairy Duster

Groundcovers – Dyssodia, Blackfoot Daisy, Goodding's Verbena

Vines – Queens Wreath

- See DC Ranch Design and Construction Manual book for a complete list of over 300 plant species available.
- Consult Environmental Site Plan (ESP) for designated street tree