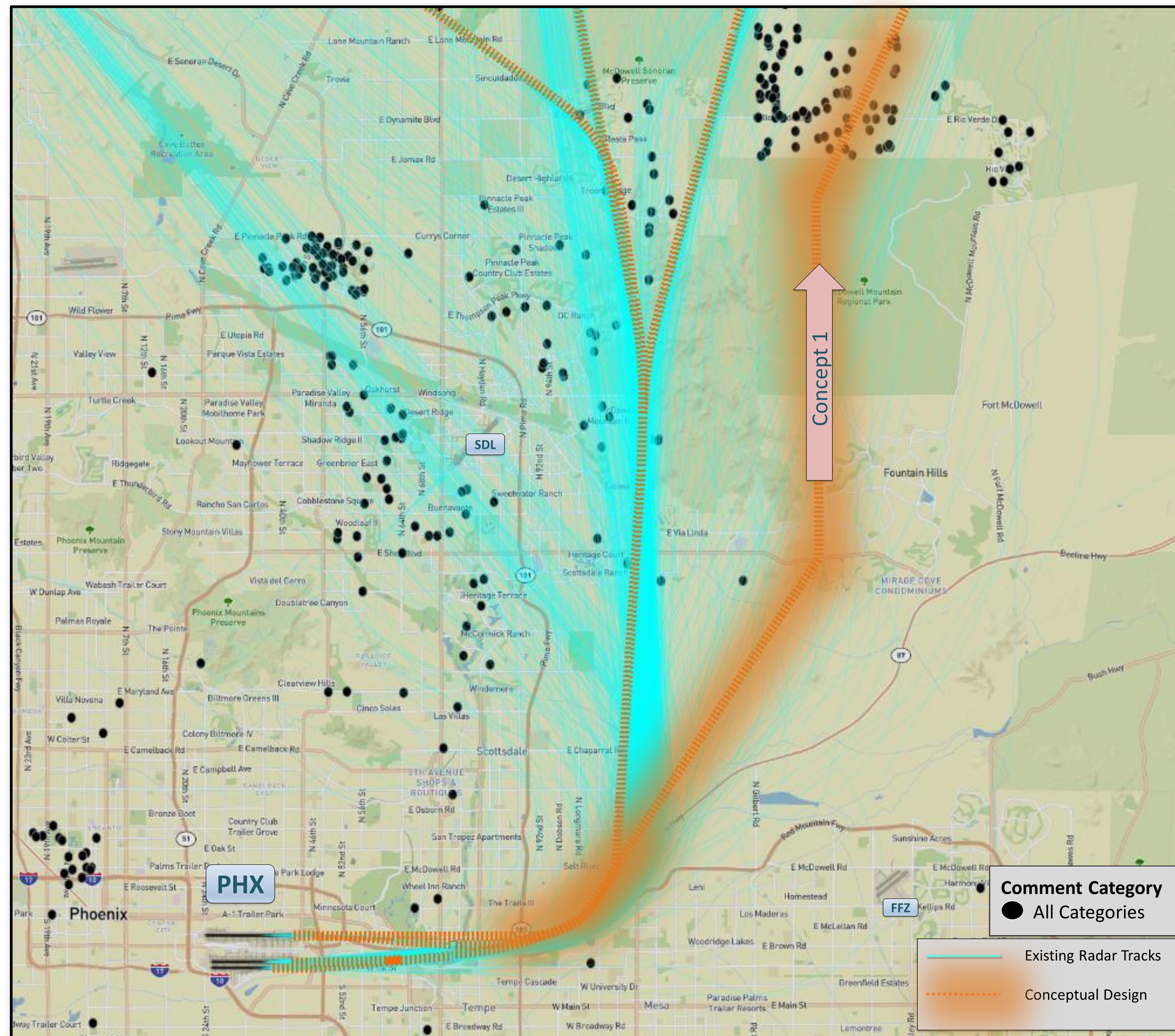


PHX

Phoenix Sky Harbor International Airport

Concept 1 Departures East Flow

- Existing flight tracks and a conceptual design that would affect the departures during east flow operations at PHX that turn to the north and northeast.
- Concept 1 would supplement existing east flow northbound procedures. This would allow roughly 30% of the aircraft to be moved to the east (Concept 1).
- The orange dashed lines represent an approximation of the conceptual design. The width of the orange dashed lines and the shaded edges are not intended to depict a flight corridor or boundary.
- There were 493 comments received for Step Two.
- Note – Comment location dots in close proximity may overlap.*



PHX

Phoenix Sky Harbor International Airport

Conceptual Design 2 Arrivals East Flow

- Existing flight tracks and a conceptual design that would affect the arrivals during east flow operations at PHX from the northeast.
- The EAGUL arrival route would be replaced by two new arrival routes. This would allow roughly 30 % of the aircraft currently on the EAGUL route to be moved to the southern most routing.
- The route to the north would be located south of the current EAGUL route prior to the final approach for PHX.
- The route to the south would over-fly just west of PHX before turning north and then east for landing.
- The orange lines are approximations of the conceptual designs. The lines, and their widths, are not intended to depict precise flight corridors or boundaries.
- There were 493 comments received for Step Two.
- Note – Comment location dots in close proximity may overlap.*

